

COMPANION FLANGE DETAIL - VANSTONE

Companion flanges provide a simple means for installing any round AccuValve® purchased with the Vanstone flange (-F) option into standard duct work. The Companion flanges are designed to slip over a common spiral duct for easy field installation. This data sheet provides the general specifications for round valve companion flanges and is intended to be used in conjunction with the standard AccuValve® submittal documentation.

MODEL CODE

11--

DUCT SIZE

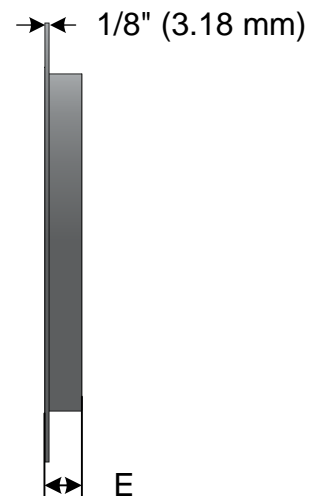
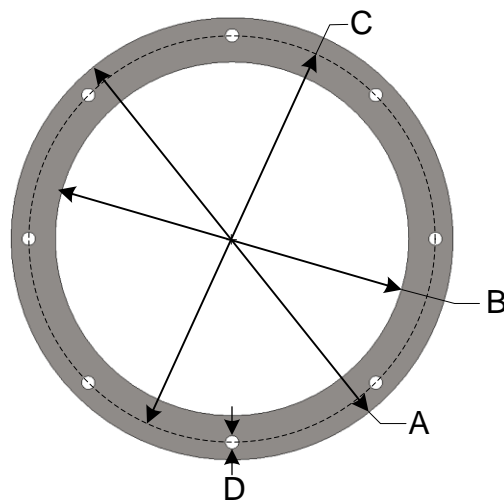
0481 – 06 inch diameter duct
 0482 – 08 inch diameter duct
 0483 – 10 inch diameter duct
 0484 – 12 inch diameter duct
 0485 – 14 inch diameter duct

FLANGE MATERIAL

01 - Galvanized Steel
 02 - 304 Stainless Steel
 03 - 316 Stainless Steel

DIMENSIONS

FLANGE SIZE	FLANGE O.D. "A"		FLANGE I.D. "B"		BOLT HOLE PATTERN Ø "C"		BOLT HOLE Ø "D"		FLANGE WIDTH "E"		BOLT HOLE QUANTITY
	in	mm	in	mm	in	mm	in	mm	in	mm	
06	8.5	216	6.13	156	7.5	191	0.375	9.53	1.25	31.8	6
08	10.5	267	8.13	206	9.5	241	0.375	9.53	1.25	31.8	8
10	12.5	318	10.13	257.2	11.5	292	0.375	9.53	1.25	31.8	8
12	15.0	381	12.19	309.6	13.8	351	0.438	11.1	1.5	38.1	12
14	17.0	432	14.19	360.4	15.8	402	0.438	11.1	1.5	38.1	12



21 COMMERCE DRIVE
 DANBURY CT, 06810
 Tel: 203-445-9991

SUBMITTAL DRAWING COMPANION FLANGE DETAIL – VANSTONE

Sold By:

THIS DOCUMENT IS SUBJECT TO CHANGE WITHOUT NOTICE.

THIS DOCUMENT OR THE CONTENTS THEREOF SHALL NOT BE MODIFIED WITHOUT PRIOR WRITTEN PERMISSION BY ACCUTROL LLC.

SIZE	ECN NO	DWG NO	REV
B	2507	COMPANION FLANGE DETAIL – VANSTONE	A
SCALE	NTS	REV. DATE: 5-8-19	SHEET
			1 OF 2

COMPANION FLANGE DETAIL - VANSTONE

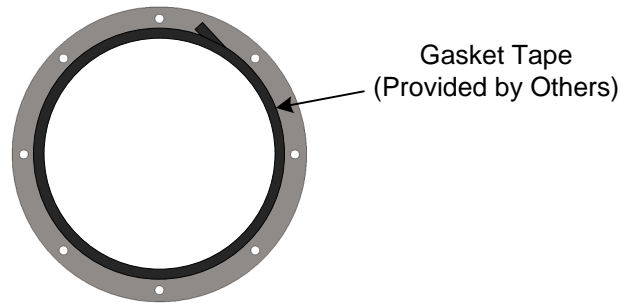
INSTALLATION INSTRUCTIONS

Hardware Required (provided by others)

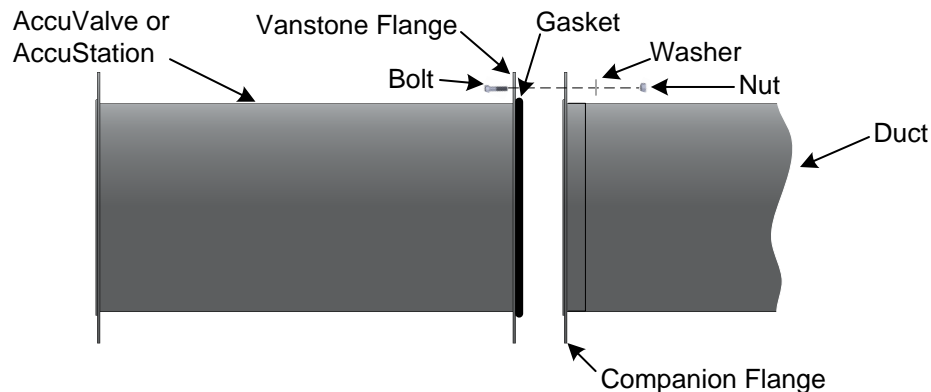
Valve Size	Connecting Hardware Required per Valve (Bolts, Nuts, and Washers)							Gasket Tape 1/2" Wide	
	Qty	Bolt Size		Nut		Washer ID			
06	12	5/16 x 1"	M8 x 25mm	5/16"	M8	5/16"	M8	44"	112cm
08	16	5/16 x 1"	M8 x 25mm	5/16"	M8	5/16"	M8	56"	142cm
10	16	5/16 x 1"	M8 x 25mm	5/16"	M8	5/16"	M8	68"	173cm
12	24	3/8 x 1"	M10 x 25mm	3/8"	M10	3/8"	M10	80"	203cm
14	24	3/8 x 1"	M10 x 25mm	3/8"	M10	3/8"	M10	94"	239cm

Installation

1. Verify the duct mounting location is sized appropriately for the valve being installed
2. Install companion flanges on each duct end using appropriate hardware and sealant.
3. Apply gasket tape to each Vanstone flange on valve just inside the bolt-hole circle as shown below.



4. Position valve into duct opening, rotate Vanstone Flange rings to align with the companion bolt holes, install the bolts, washers, and nuts per figure below.



5. Secure nuts alternating across the bolt circle to provide even torque as you tighten. Torque each nut to approximately 80 ft-lb



21 COMMERCE DRIVE
DANBURY CT, 06810
Tel: 203-445-9991

SUBMITTAL DRAWING COMPANION FLANGE DETAIL - VANSTONE

Sold By:

THIS DOCUMENT IS SUBJECT TO CHANGE WITHOUT NOTICE.
THIS DOCUMENT OR THE CONTENTS THEREOF SHALL NOT BE MODIFIED WITHOUT PRIOR WRITTEN PERMISSION BY ACCUTROL LLC.

SIZE	ECN NO	DWG NO	REV
B	2507	COMPANION FLANGE DETAIL - VANSTONE	A
SCALE	NTS	REV. DATE: 5-8-19	SHEET 2 OF 2