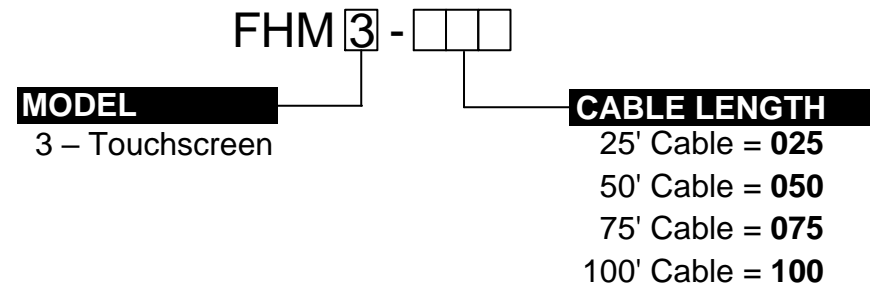


# FUME HOOD MONITOR SUBMITTAL (TOUCHSCREEN)

The FHM3 used in conjunction with the AccuValve® Model AVC6 Control Module provides a comprehensive Fume Hood Control System. The FHM3 is provided with 2 mounting screws for securing to a standard single-gang electrical box and a prefabricated factory cable for connecting to the AVC6 Control Module.



**NOTE:** If a longer cable is required, please contact factory.

## SPECIFICATIONS

### Electrical:

The FHM3 is powered by the AVC6 Control Module using a factory provided cable.

### Temperature Range:

Operating: -4°F to +158°F (-20°C to +70°C)

Storage: -22°F to 176°F (-30°C to +80°C)

### Physical Construction:

ABS Plastic Enclosure and Mounting Plate, UL94 V-0, RoHS Compliant.

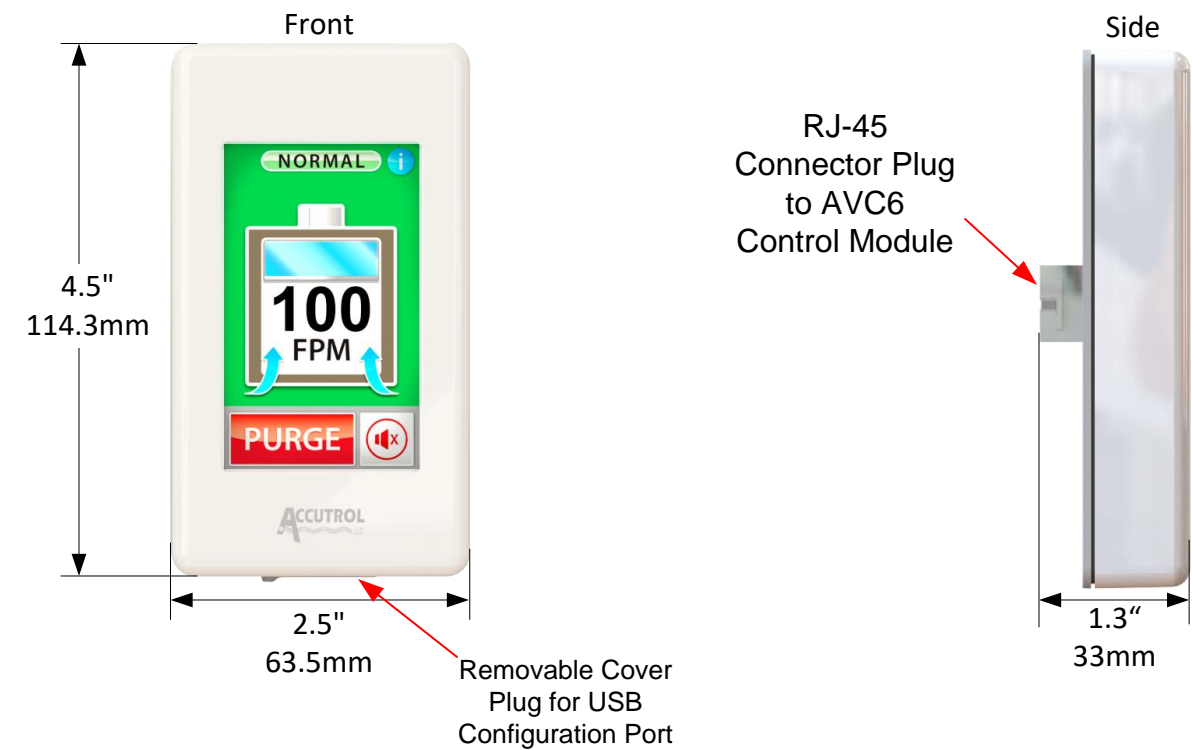
### Mounting:

Installs directly into a standard single-gang electrical box, usually provided on the fume hood

### Configuration Port:

Easily accessible USB Type C protected by removable rubber plug.

## DIMENSIONS & FEATURES: FHM3



### Display

3.2 Inch Touchscreen – Resistive. Resolution: 400 x 240 Pixel, 64K Colors

Indicates face velocity or airflow volume on screen

Provides alarm and setback messages on screen

### Alarm

Visual Alarm Indicator: on screen

Display Alarm Indicator: Provides message identifying alarm type on screen

Audible Alarm Indicator: Horn, 90dB @ 4KHz

Mute button provided for silencing horn on screen

### Purge

Button provided to activate and deactivate local purge on screen

Visual Purge Indicator: on screen

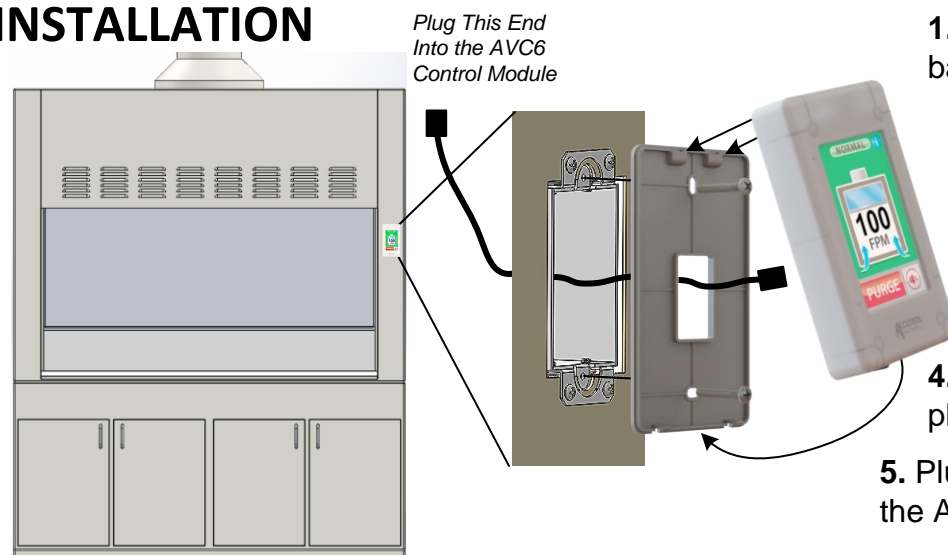
### Configuration Port

USB Type C protected by removable rubber plug

Connect to PC with the AccuValve Insight software

All configuration settings for the FHM3 are programmed through the AccuValve Insight software

## INSTALLATION



1. Feed the display cable into the back of the electrical box.
2. Secure the FHM3 back plate to the electrical box using the two screws provided.
3. Plug the display cable into the RJ-45 connector located on the back of the FHM3.
4. Snap the front bezel onto the back plate mounted to the fume hood
5. Plug the other end of the cable into the AVC6 Control Module.