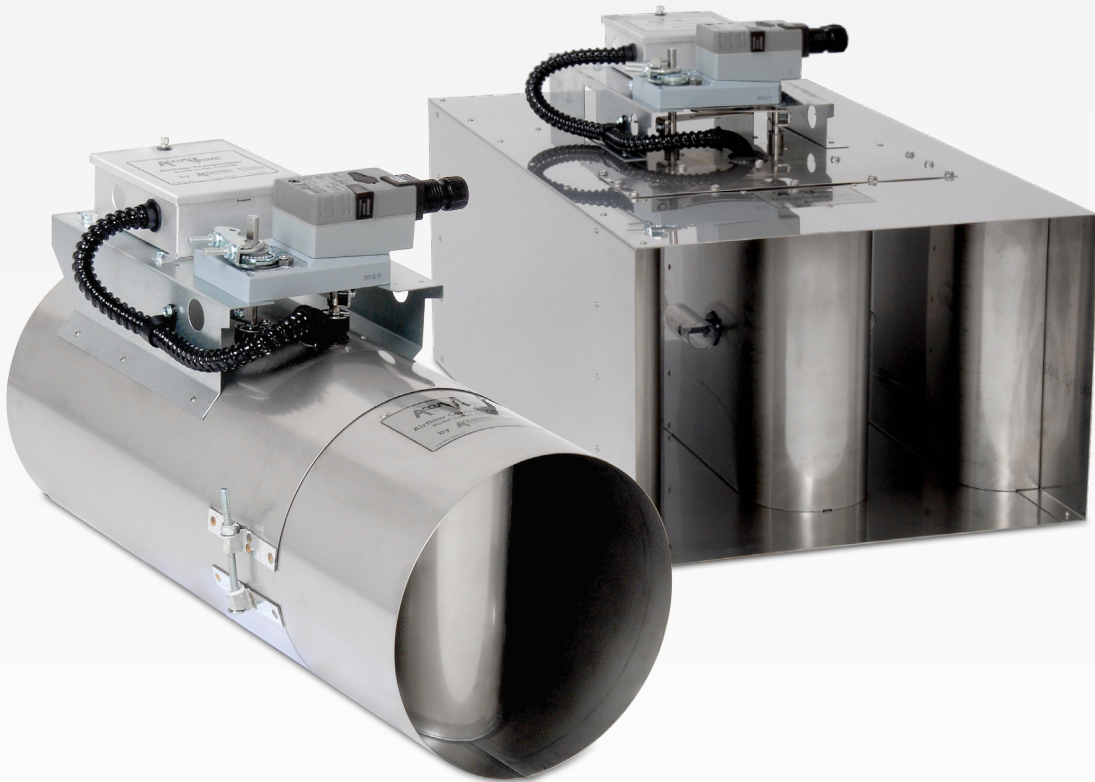




Sound Performance Data Sheet

Exhaust, Supply (Discharge), Radiated



Octave Band Exhaust Sound Power Level (dB re. 10 ⁻¹² Watts)																																	
Valve Size (mm)	CFM	L/s	CMH	0.25" ΔPs (62Pa)						0.5" ΔPs (125Pa)						1.0" ΔPs (250Pa)						2.0" ΔPs (500Pa)						3.0" ΔPs (750Pa)					
				125	250	500	1K	2K	4K	125	250	500	1K	2K	4K	125	250	500	1K	2K	4K	125	250	500	1K	2K	4K	125	250	500	1K	2K	4K
				2	3	4	5	6	7	2	3	4	5	6	7	2	3	4	5	6	7	2	3	4	5	6	7	2	3	4	5	6	7
6" (152)	50	24	85	33	31	32	28	33	37	35	36	33	33	37	36	37	38	40	38	41	41	42	43	44	39	43	43	44	44	43	45	46	
	110	52	187	43	42	43	37	42	46	45	46	42	39	38	45	46	43	46	42	48	48	50	49	49	44	50	50	52	50	52	52		
	170	81	289	44	53	48	41	50	46	54	50	51	46	46	50	50	51	48	49	48	51	53	54	52	49	53	54	52	54	56	55		
	230	109	391	52	48	51	53	49	43	54	55	52	47	50	57	55	50	51	49	52	58	57	54	54	52	55	60	59	57	57	59		
	290	138	493	-	-	-	-	-	-	50	50	59	52	46	51	63	57	50	54	52	55	61	60	57	57	55	57	62	62	62	59	59	
8" (203)	100	48	170	46	35	41	40	42	34	48	45	46	39	53	46	50	49	50	51	53	50	53	52	55	57	55	56	56	56	58	58		
	300	143	510	46	41	44	41	38	34	51	48	50	47	41	57	52	53	52	49	61	59	58	59	57	65	63	62	62	63	61	61		
	500	238	850	47	48	47	46	41	38	52	53	52	51	48	58	56	55	56	53	62	61	63	61	61	67	65	63	64	64	63	63		
	600	285	1020	47	51	49	51	46	42	53	56	53	55	52	60	58	57	59	55	64	62	64	63	63	68	66	64	65	65	65	65		
	700	333	1190	-	-	-	-	-	-	54	56	53	55	52	61	59	58	60	56	66	65	63	64	66	68	67	65	66	68	67	67	67	
10" (254)	150	71	255	45	41	42	39	45	35	48	46	45	43	40	52	49	47	45	50	54	53	52	51	54	56	52	53	55	55	61	61		
	300	143	510	48	41	43	41	45	36	50	46	46	45	48	57	51	52	51	53	55	58	57	58	58	58	58	55	57	58	57	61	61	
	500	238	850	46	42	42	41	41	34	53	48	48	46	47	59	55	53	54	54	52	60	58	59	60	69	65	62	61	63	64	64		
	800	380	1360	49	42	41	43	45	35	54	49	48	49	50	62	57	55	56	58	53	64	62	62	62	71	66	65	64	66	65	65		
	1000	475	1700	46	45	43	49	51	41	53	53	51	55	57	63	57	55	57	58	54	70	66	63	63	74	70	68	67	70	69	69		
12" (305)	200	95	340	42	36	35	40	50	37	48	43	41	45	42	52	46	45	48	57	61	54	51	53	57	62	59	56	56	59	62	62		
	400	190	680	46	44	45	42	47	41	51	49	49	46	51	56	53	53	55	55	62	57	55	56	58	63	62	59	60	62	63	63		
	800	380	1360	46	44	44	43	46	48	52	50	49	48	51	60	58	55	56	57	66	63	60	62	62	69	67	63	65	66	65	65		
	1200	570	2040	45	44	42	46	48	51	52	52	49	53	55	61	58	55	57	60	69	67	63	64	66	73	71	67	69	70	69	69		
	1500	713	2550	45*	45*	43*	49*	50*	52*	53	53	50	55	57	63	59	55	59	60	61	69	66	63	64	74	72	67	70	71	70	70		
14" (356)	200	95	340	35	30	29	27	22	<20	39	35	32	28	24	45	36	37	40	39	47	40	41	44	46	51	43	42	46	49	49	49		
	600	285	1020	40	40	40	44	41	36	44	45	44	48	46	50	46	45	48	48	54	52	51	53	54	56	55	53	54	55	54	54		
	1000	475	1700	41	41	43	44	42	36	46	46	47	48	47	53	52	51	53	49	58	55	53	56	57	62	60	57	60	61	58	58		
	1600	760	2720	44	43	44	48	48	38	50	49	48	52	52	43	55	53	52	56	61	59	56	60	63	65	63	59	62	65	60	60		
	2200	1045	3740	50†	47†	41†	51†	59†	42†	56	52	47	55	62	48	57	56	54	59	63	62	61	63	66	67	65	64	65	67	63	63		

All specifications are subject to change without notice.

Notes

- Measurements shown in *ITALIC* were less than 6dB above background noise.
- Exhaust sound is the noise emitted from the valve and transmitted through the exhaust duct into the room. Exhaust sound travels against the direction of airflow.
- ΔPs = difference in pressure across the valve
- Data was obtained from tests conducted in accordance with ANSI/ASHRAE Standard 130.
- For sound Power Level performance data at different flow rates or pressures, contact Accutrol.
- * dB levels based on maximum airflow for 12" valve of 1333 CFM (629 L/s; 2265 CMH) at 0.25"
- † dB levels based on maximum airflow for 14" valve of 2090 CFM (986 L/s; 3551 CMH) at 0.25"
- ‡ dB levels based on maximum airflow for 12" x 48" valve of 5881 CFM (2775 L/s; 9992 CMH) at 0.25"



Octave Band Exhaust Sound Power Level (dB re. 10 ⁻¹² Watts)																																		
Valve Size (mm)	CFM	L/s	CMH	0.25" ΔPs (62Pa)						0.5" ΔPs (125Pa)						1.0" ΔPs (250Pa)						2.0" ΔPs (500Pa)						3.0" ΔPs (750Pa)						
				125	250	500	1K	2K	4K	125	250	500	1K	2K	4K	125	250	500	1K	2K	4K	125	250	500	1K	2K	4K	125	250	500	1K	2K	4K	
				2	3	4	5	6	7	2	3	4	5	6	7	2	3	4	5	6	7	2	3	4	5	6	7	2	3	4	5	6	7	
12"x18" (305x457)	200	95	340	46	35	36	40	39	28	49	41	41	43	44	37	55	47	43	44	48	46	46	57	53	48	48	52	54	60	57	51	50	56	61
	600	285	1020	42	33	37	44	42	30	49	43	43	46	46	38	58	52	49	52	53	49	67	64	55	58	59	60	60	67	69	60	55	58	61
	1000	475	1700	41	33	37	42	40	27	51	46	46	49	47	38	59	52	51	54	54	50	70	64	59	60	62	60	75	73	66	65	66	67	
	1800	855	3060	44	39	41	47	47	34	52	49	49	52	52	42	61	56	53	58	59	52	70	68	60	62	63	60	75	73	66	66	66	66	
	2000	950	3400	45	41	43	49	51	39	54	52	51	54	56	48	60	56	54	59	60	53	73	69	62	65	66	66	75	74	67	67	67	66	
	400	190	680	36	32	33	33	30	23	45	42	42	41	39	34	51	46	46	47	49	49	51	56	53	54	55	61	65	64	62	60	64	66	
12"x24" (305x610)	1200	570	2040	40	36	38	38	33	23	48	44	45	45	42	35	55	51	53	52	52	49	64	60	60	58	60	61	67	64	64	62	66	66	
	2000	950	3400	47	39	38	38	39	24	54	46	45	44	46	36	55	53	54	55	55	50	62	60	62	61	63	62	66	64	65	64	66	66	
	2400	1140	4080	50	43	41	42	46	31	56	50	48	48	52	41	57	54	55	55	57	50	64	61	63	62	64	61	68	65	66	66	67	66	
	3000	1425	5100	57	49	43	45	52	23	62	55	51	53	58	48	60	55	53	55	59	50	65	62	63	63	64	61	69	67	68	69	69	67	
	600	285	1020	49	38	39	43	42	31	52	44	44	46	47	40	58	50	46	47	51	49	60	56	51	51	55	57	63	60	54	53	59	64	
	1800	855	3060	45	36	40	47	45	33	52	46	46	49	49	41	61	55	52	55	56	52	70	67	58	58	61	62	70	72	63	58	61	64	
12"x36" (305x915)	3000	1425	5100	44	36	40	45	43	30	54	49	49	52	50	41	62	55	54	57	53	73	67	62	63	65	63	65	78	76	69	68	69	70	
	4200	1995	7140	47	42	44	50	50	37	55	52	52	55	45	45	64	59	56	61	62	55	73	71	63	65	66	63	78	76	69	69	69	69	
	4500	2138	7650	48	44	46	52	54	42	57	55	54	57	59	51	63	59	57	62	63	56	76	72	65	68	69	78	77	70	70	70	70	69	
	800	380	1360	39	35	36	36	33	26	48	45	45	44	42	37	54	49	49	50	52	54	59	56	57	58	64	69	68	67	65	63	67	69	
	2400	1140	4080	43	39	41	41	36	26	51	47	48	48	45	38	58	54	56	55	55	52	67	63	63	61	63	64	70	67	67	65	69	69	
	4000	1900	6800	50	42	41	41	42	27	57	49	48	47	49	39	58	56	57	58	58	53	65	63	65	64	66	65	69	67	68	67	69	69	
12"x48" (305x1220)	5600	2660	9520	53	46	44	45	49	34	59	53	51	51	55	44	60	57	58	58	60	53	67	64	66	65	67	64	71	68	69	69	69	69	
	6000	2850	10200	60†	52†	46†	48†	55†	26†	65	58	54	56	61	51	63	58	56	58	62	53	68	65	66	66	67	64	72	70	71	71	72	70	

All specifications are subject to change without notice.

Notes

- Measurements shown in *ITALIC* were less than 6dB above background noise.
- Exhaust sound is the noise emitted from the valve and transmitted through the exhaust duct into the room. Exhaust sound travels against the direction of airflow.
- ΔPs = difference in pressure across the valve
- Data was obtained from tests conducted in accordance with ANSI/ASHRAE Standard 130.
- For sound Power Level performance data at different flow rates or pressures, contact Accutrol.
- * dB levels based on maximum airflow for 12" valve of 1333 CFM (629 L/s; 2265 CMH) at 0.25"
- † dB levels based on maximum airflow for 14" valve of 2090 CFM (986 L/s; 3551 CMH) at 0.25"
- ‡ dB levels based on maximum airflow for 12" x 48" valve of 5881 CFM (2775 L/s; 9992 CMH) at 0.25"



Octave Band Supply (Discharge) Sound Power Level (dB re. 10 ⁻¹² Watts)																																	
Valve Size (mm)	CFM	L/s	CMH	0.25" ΔPs (62Pa)						0.5" ΔPs (125Pa)						1.0" ΔPs (250Pa)						2.0" ΔPs (500Pa)						3.0" ΔPs (750Pa)					
				125	250	500	1K	2K	4K	125	250	500	1K	2K	4K	125	250	500	1K	2K	4K	125	250	500	1K	2K	4K	125	250	500	1K	2K	4K
				2	3	4	5	6	7	2	3	4	5	6	7	2	3	4	5	6	7	2	3	4	5	6	7	2	3	4	5	6	7
6" (152)	50	24	85	34	32	31	30	29	28	39	37	36	36	34	35	36	37	37	38	38	42	41	42	44	45	45	46	47	49	49			
	110	52	187	40	37	41	39	41	38	45	42	45	43	44	39	40	43	44	46	42	45	46	47	48	50	49	50	51	54	53			
	170	81	289	44	41	46	44	46	42	48	46	46	48	47	42	44	47	47	50	47	48	50	51	52	55	53	51	52	54	56			
	230	109	391	47	44	49	49	45	48	48	48	48	52	52	48	51	48	51	52	54	53	50	52	55	56	54	53	56	58	58			
	290	138	493	-	-	-	-	-	-	-	50	50	52	60	54	48	49	51	59	55	51	52	54	55	59	58	55	58	61	61	59		
	100	48	170	44	41	41	40	41	40	37	47	48	48	46	46	42	49	48	49	51	51	54	53	54	54	54	56	62	61	60	59		
8" (203)	300	143	510	44	42	42	41	40	38	49	49	49	47	44	56	56	54	54	54	52	60	61	58	58	59	57	65	69	64	64			
	500	238	850	46	43	45	49	44	40	52	51	51	54	50	58	58	57	57	56	54	61	63	59	59	59	58	72	67	65	66			
	600	285	1020	48	45	48	52	46	43	53	53	54	56	52	60	60	56	59	58	56	65	68	63	63	64	69	72	67	66	66			
	700	333	1190	-	-	-	-	-	-	55	55	55	59	56	54	60	60	58	60	59	66	69	64	64	66	64	69	73	67	66	67		
	150	71	255	41	36	33	39	44	44	36	46	42	38	44	47	41	54	50	50	54	53	56	57	54	54	56	60	62	58	59	59		
	300	143	510	44	39	38	40	45	37	49	47	47	45	47	50	43	57	54	56	54	62	63	60	60	60	64	65	67	63	63	63		
10" (254)	500	238	850	46	42	42	42	41	38	52	50	48	49	45	59	57	53	54	55	54	66	65	65	60	63	62	69	70	64	65	66		
	800	380	1360	50	44	42	49	49	41	55	51	49	53	54	47	63	60	56	58	56	67	68	62	62	63	62	70	72	66	66	66		
	1000	475	1700	51	46	44	51	52	45	57	53	51	56	51	63	61	56	59	60	57	69	69	64	64	65	64	71	73	68	67	67		
	150	71	255	41	36	33	39	44	44	36	46	42	38	44	47	41	54	50	50	54	53	56	57	54	54	56	60	62	58	59	59		
	300	143	510	44	39	38	40	45	37	49	47	47	45	47	50	43	57	54	56	54	62	63	60	60	60	64	65	67	63	63	63		
	500	238	850	46	42	42	42	41	38	52	50	48	49	45	59	57	53	54	55	54	66	65	65	59	60	63	62	69	70	64	65	66	
12" (305)	800	380	1360	50	44	42	49	49	41	55	51	49	53	54	47	63	60	56	58	56	67	68	62	62	63	62	70	72	66	65	66		
	1200	570	2040	50	46	44	49	49	41	55	53	50	54	48	64	61	57	60	60	58	68	68	62	64	65	63	72	72	66	68	68		
	1500	713	2550	54*	48*	45*	52*	54*	48*	59	55	52	57	59	54	64	62	57	61	62	69	69	63	66	66	64	73	74	68	69	69		
	200	95	340	37	31	30	29	27	<20	41	36	34	35	34	28	49	40	39	39	41	37	52	45	44	46	48	55	48	45	48	51		
	600	285	1020	41	40	39	43	42	41	47	46	44	48	48	47	54	47	47	48	50	47	60	54	53	54	57	63	58	56	57	60		
	1000	475	1700	43	42	42	45	45	42	50	48	47	50	49	46	57	53	51	53	55	53	64	58	55	57	59	63	59	60	63	59		
14" (356)	1600	760	2720	49	48	45	51	52	48	56	54	50	54	55	62	59	56	53	57	59	67	62	58	59	62	59	71	66	62	65	62		
	2200	1045	3740	49†	49†	47†	52†	57†	46†	56	55	52	56	60	50	62	60	57	59	61	68	65	63	64	66	63	73	69	65	64	67		

All specifications are subject to change without notice.

Notes

- Measurements shown in *ITALIC* were less than 6dB above background noise.
- Exhaust sound is the noise emitted from the valve and transmitted through the exhaust duct into the room. Exhaust sound travels against the direction of airflow.
- ΔPs = difference in pressure across the valve
- Data was obtained from tests conducted in accordance with ANSI/ASHRAE Standard 130.
- For sound Power Level performance data at different flow rates or pressures, contact Accutrol.
- * dB levels based on maximum airflow for 12" valve of 1333 CFM (629 L/s; 2265 CMH) at 0.25"
- † dB levels based on maximum airflow for 14" valve of 2090 CFM (986 L/s; 3551 CMH) at 0.25"
- ‡ dB levels based on maximum airflow for 12" x 48" valve of 5881 CFM (2775 L/s; 9992 CMH) at 0.25"

†‡

Octave Band Supply (Discharge) Sound Power Level (dB re. 10 ⁻¹² Watts)																																						
Valve Size (mm)	CFM	L/s	CMH	0.25" ΔPs (62Pa)							0.5" ΔPs (125Pa)							1.0" ΔPs (250Pa)							2.0" ΔPs (500Pa)							3.0" ΔPs (750Pa)						
				125	250	500	1K	2K	4K	4K	125	250	500	1K	2K	4K	4K	125	250	500	1K	2K	4K	4K	125	250	500	1K	2K	4K	4K	125	250	500	1K	2K	4K	4K
				2	3	4	5	6	7	7	2	3	4	5	6	7	7	2	3	4	5	6	7	7	2	3	4	5	6	7	7	2	3	4	5	6	7	7
12"x18" (305x457)	200	95	340	50	39	39	43	50	39	46	45	48	51	46	53	55	50	52	55	53	65	62	56	56	60	60	66	64	59	59	63	64						
	600	285	1020	45	33	38	45	47	41	52	45	46	49	52	47	58	52	54	58	56	73	71	59	58	62	63	74	75	65	62	64	66						
	1000	475	1700	46	36	39	47	47	39	57	50	48	52	53	48	56	53	56	59	57	76	70	60	61	64	65	81	78	69	65	68	70						
	1800	855	3060	47	41	42	50	50	43	56	50	50	54	55	49	68	64	55	59	61	60	77	73	63	63	66	81	78	68	66	69	69						
	2000	950	3400	48	42	42	52	53	44	57	52	52	56	57	51	67	62	56	60	62	59	78	75	65	65	68	81	79	72	68	70	70						
12"x24" (305x610)	400	190	680	38	29	29	41	59	42	47	45	46	47	41	59	55	54	54	57	53	62	60	58	59	63	64	74	72	66	65	68	68						
	1200	570	2040	43	41	40	43	46	38	53	51	48	49	50	44	60	58	55	57	55	69	65	62	62	65	64	75	72	67	65	69	69						
	2000	950	3400	47	44	43	44	43	38	56	51	49	51	52	45	59	57	56	58	55	70	68	63	63	67	66	73	73	68	67	71	70						
	2400	1140	4080	50	46	44	49	49	41	56	52	49	51	53	45	61	58	55	58	60	55	71	68	64	64	68	74	74	69	68	72	71						
	3000	1425	5100	54	48	44	52	54	42	59	56	52	54	58	49	64	62	57	61	62	59	71	66	64	65	69	77	75	70	69	73	72						
12"x36" (305x915)	600	285	1020	53	42	42	46	53	42	57	48	48	51	54	49	64	58	53	55	58	68	65	59	59	63	69	67	62	62	66	67							
	1800	855	3060	48	36	41	48	50	44	55	48	49	52	55	50	67	61	55	57	61	76	74	62	61	65	66	77	78	68	65	67	69						
	3000	1425	5100	49	39	42	50	50	43	60	53	51	55	56	51	66	59	56	59	62	79	73	63	64	67	68	84	81	72	68	71	73						
	4200	1995	7140	50	44	45	53	53	46	59	53	53	57	58	52	71	67	58	62	64	80	76	66	66	69	68	84	81	71	69	72	72						
	4500	2138	7650	51	45	45	55	56	47	60	55	55	59	60	54	70	65	59	63	65	81	78	68	68	71	70	84	82	75	71	73	73						
12"x48" (305x1220)	800	380	1360	41	33	32	44	62	45	47	41	39	49	62	49	56	50	49	53	64	59	58	55	57	62	63	64	63	59	61	65	64						
	2400	1140	4080	46	44	43	46	49	41	52	51	50	52	54	47	61	60	57	59	62	66	67	64	65	65	65	69	71	67	68	69	68						
	4000	1900	6800	50	47	46	47	46	41	56	55	53	53	53	49	64	62	57	59	60	57	69	69	63	66	67	73	74	68	70	72	70						
	5600	2660	9520	53	49	47	52	52	44	59	56	53	57	57	51	67	64	60	63	63	61	71	71	65	67	68	75	75	69	71	72	71						
	6000	2850	10200	57 [†]	51 [†]	47 [†]	55 [†]	57 [†]	45 [†]	62	58	55	60	62	57	67	65	60	64	65	62	72	72	66	69	69	76	76	71	72	73	72						

All specifications are subject to change without notice.

Notes

- Measurements shown in *ITALIC* were less than 6dB above background noise.
- Exhaust sound is the noise emitted from the valve and transmitted through the exhaust duct into the room. Exhaust sound travels against the direction of airflow.
- ΔPs = difference in pressure across the valve
- Data was obtained from tests conducted in accordance with ANSI/ASHRAE Standard 130.
- For sound Power Level performance data at different flow rates or pressures, contact Accutrol.
- * dB levels based on maximum airflow for 12" valve of 1333 CFM (629 L/s; 2265 CMH) at 0.25"
- † dB levels based on maximum airflow for 14" valve of 2090 CFM (986 L/s; 3551 CMH) at 0.25"
- ‡ dB levels based on maximum airflow for 12" x 48" valve of 5881 CFM (2775 L/s; 9992 CMH) at 0.25"



Octave Band Radiated Sound Power Level (dB re. 10 ⁻¹² Watts)																																	
Valve Size (mm)	CFM	L/s	CMH	0.25" ΔPs (62Pa)						0.5" ΔPs (125Pa)						1.0" ΔPs (250Pa)						2.0" ΔPs (500Pa)						3.0" ΔPs (750Pa)					
				125	250	500	1K	2K	4K	125	250	500	1K	2K	4K	125	250	500	1K	2K	4K	125	250	500	1K	2K	4K	125	250	500	1K	2K	4K
				2	3	4	5	6	7	2	3	4	5	6	7	2	3	4	5	6	7	2	3	4	5	6	7	2	3	4	5	6	7
6" (152)	50	24	85	38	34	21	<20	<20	<20	39	34	24	18	16	19	32	28	21	18	17	18	32	29	24	23	22	34	28	27	26	26		
	110	52	187	37	34	22	<20	<20	<20	39	35	27	24	22	22	31	29	27	24	24	21	33	30	31	29	28	35	31	35	33	32		
	170	81	289	38	33	28	25	24	<20	39	35	33	29	29	25	31	30	30	28	28	25	33	33	36	33	34	35	34	39	36	35		
	230	109	391	38	33	31	28	31	23	40	36	35	32	34	28	32	30	34	32	33	29	34	33	38	36	37	35	36	41	40	38		
	290	138	493	-	-	-	-	-	-	40	36	38	38	40	30	33	33	38	37	39	31	34	36	41	38	40	36	39	45	41	39		
	100	48	170	45	34	26	21	<20	<20	46	37	28	24	24	22	50	41	45	41	38	36	49	41	42	39	39	51	45	47	43	44		
	300	143	510	42	33	35	31	27	20	45	38	39	37	34	28	49	42	48	45	43	38	51	48	51	52	51	49	53	51	53	51		
8" (203)	500	238	850	43	32	36	31	32	46	39	39	38	38	32	50	43	52	43	43	39	53	49	53	50	50	47	55	53	55	54	52		
	600	285	1020	42	32	38	32	32	46	39	44	39	39	33	49	43	46	43	43	40	53	50	52	50	51	47	55	54	55	53	52		
	700	333	1190	-	-	-	-	-	49	41	51	42	43	36	50	43	46	43	45	41	53	51	51	49	51	48	56	55	56	53	52		
	150	71	255	41	31	30	26	27	27	43	35	33	31	33	32	51	40	39	38	40	40	50	43	43	43	47	45	52	46	44	46	50	
	300	143	510	45	33	31	30	26	30	46	39	36	35	33	36	51	42	41	41	41	42	52	47	47	46	48	54	51	50	49	52	52	
	500	238	850	38	30	31	31	27	25	43	38	37	36	34	33	50	43	43	43	42	41	55	50	49	48	50	48	58	56	54	51	53	
	800	380	1360	42	32	34	34	34	32	46	39	40	40	40	38	51	46	46	44	44	44	54	52	50	50	51	49	58	57	54	53	53	
10" (254)	1000	475	1700	45	33	38	36	37	49	40	44	42	42	40	52	47	46	45	46	45	57	53	52	51	51	48	56	55	56	53	54		
	150	71	255	41	31	30	26	27	27	43	35	33	31	33	32	51	40	39	38	40	40	50	43	43	43	47	45	52	46	44	50	49	
	300	143	510	45	33	31	30	26	30	46	39	36	35	33	36	51	42	41	41	41	42	52	47	47	46	48	54	51	50	49	52	52	
	500	238	850	38	30	31	31	27	25	43	38	37	36	34	33	50	43	43	43	42	41	55	50	49	48	50	48	58	56	54	51	53	
	800	380	1360	42	32	34	34	34	32	46	39	40	40	40	38	51	46	46	44	44	44	54	52	50	50	51	49	58	57	54	53	53	
	1000	475	1700	45	33	38	36	37	34	49	40	44	42	42	40	52	47	46	45	46	45	57	53	52	51	51	48	56	55	56	53	54	
	200	95	340	41	32	33	32	33	23	44	36	37	35	38	29	49	40	41	43	42	45	50	45	45	46	48	51	53	47	47	48	51	
12" (305)	400	190	680	41	31	34	32	28	45	37	38	37	34	30	50	42	43	45	43	44	52	48	48	50	50	49	55	51	50	52	53	51	
	800	380	1360	39	31	32	32	28	44	38	37	37	34	30	49	44	43	44	44	40	53	50	48	50	51	48	57	55	52	53	54	53	
	1200	570	2040	40	32	37	32	30	46	39	42	37	36	31	50	46	44	44	44	40	55	52	50	50	51	48	58	56	53	53	54	54	
	1500	713	2550	45*	36*	37*	35*	34*	26*	50	43	42	41	40	35	52	46	45	44	44	40	57	54	51	51	49	60	58	54	54	54	54	
	200	95	340	33	26	20	20	<20	<20	35	29	27	28	26	21	44	33	31	35	35	32	42	35	39	44	45	46	38	42	48	49	48	
	600	285	1020	30	25	25	24	20	<20	35	31	30	32	29	24	39	35	37	37	37	33	44	41	45	46	46	46	46	49	50	51	49	
	1000	475	1700	30	27	23	26	23	<20	35	33	33	33	31	26	43	38	39	39	39	35	46	44	46	46	46	46	48	51	51	49	49	
14" (356)	1600	760	2720	34	29	28	27	27	39	35	35	34	33	25	43	40	41	41	43	37	47	47	48	48	48	45	51	50	52	52	49		
	2200	1045	3740	37†	34†	36†	32†	38†	42	40	42	39	43	32	43	42	43	42	44	36	48	48	49	49	48	45	52	52	54	53	52		
	200	95	340	33	26	20	20	<20	<20	35	29	27	28	26	21	44	33	31	35	35	32	42	35	39	44	45	46	38	42	48	49	48	
	600	285	1020	30	25	25	24	20	<20	35	31	30	32	29	24	39	35	37	37	37	33	44	41	45	46	46	46	46	49	50	51	49	
	1000	475	1700	30	27	23	26	23	<20	35	33	33	33	31	26	43	38	39	39	39	35	46	44	46	46	46	46	48	51	51	49	49	
	1600	760	2720	34	29	28	27	27	<20	39	35	35	34	33	25	43	40	41	41	43	37	47	47	48	48	48	45	51	50	52	52	49	
	2200	1045	3740	37†	34†	36†	32†	38†	42	40	42	39	43	32	43	42	43	42	44	36	48	48	49	49	48	45	52	52	54	53	52	50	

All specifications are subject to change without notice.

Notes

- Measurements shown in *ITALIC* were less than 6dB above background noise.
- Exhaust sound is the noise emitted from the valve and transmitted through the exhaust duct into the room. Exhaust sound travels against the direction of airflow.
- ΔPs = difference in pressure across the valve
- Data was obtained from tests conducted in accordance with ANSI/ASHRAE Standard 130.
- For sound Power Level performance data at different flow rates or pressures, contact Accutrol.
- * dB levels based on maximum airflow for 12" valve of 1333 CFM (629 L/s; 2265 CMH) at 0.25"
- † dB levels based on maximum airflow for 14" valve of 2090 CFM (986 L/s; 3551 CMH) at 0.25"
- ‡ dB levels based on maximum airflow for 12" x 48" valve of 5881 CFM (2775 L/s; 9992 CMH) at 0.25"



Octave Band Radiated Sound Power Level (dB re. 10 ⁻¹² Watts)																																						
Valve Size (mm)	CFM	L/s	CMH	0.25" ΔPs (62Pa)							0.5" ΔPs (125Pa)							1.0" ΔPs (250Pa)							2.0" ΔPs (500Pa)							3.0" ΔPs (750Pa)						
				125	250	500	1K	2K	4K	7	125	250	500	1K	2K	4K	7	125	250	500	1K	2K	4K	7	125	250	500	1K	2K	4K	7	125	250	500	1K	2K	4K	7
				2	3	4	5	6	7	<20	2	3	4	5	6	7	<20	2	3	4	5	6	7	<20	2	3	4	5	6	7	<20	2	3	4	5	6	7	<20
12"x18" (305x457)	200	95	340	41	33	25	<20	<20	<20	47	40	34	29	26	22	27	31	27	61	56	48	43	41	37	64	60	55	49	46	43								
	600	285	1020	36	31	25	21	<20	<20	46	41	35	30	27	22	28	33	28	67	61	51	44	42	39	70	65	57	50	47	43								
	1000	475	1700	37	34	28	23	<20	<20	47	43	37	31	27	23	30	34	30	66	60	52	44	42	38	74	66	58	50	47	43								
	1800	855	3060	44	37	36	26	26	<20	52	47	44	34	33	23	33	36	29	67	63	55	48	45	40	72	69	60	51	48	43								
	2000	950	3400	42	40	41	30	30	<20	51	49	47	37	36	26	36	39	30	66	62	56	49	45	39	73	69	61	53	49	44								
12"x24" (305x610)	400	190	680	40	33	27	<20	<20	46	42	35	27	23	21	23	30	30	57	54	48	40	40	41	64	63	57	47	45	43									
	1200	570	2040	41	37	33	29	23	<20	49	45	41	36	32	28	36	31	28	63	60	53	44	40	40	68	65	58	48	46	44								
	2000	950	3400	42	37	32	26	22	<20	52	45	40	32	29	22	38	34	29	63	61	54	45	41	40	66	66	58	49	46	44								
	2400	1140	4080	45	39	35	30	30	20	52	47	43	37	37	29	46	39	36	64	61	54	46	42	40	67	66	59	50	47	45								
	3000	1425	5100	47	42	39	32	32	<20	53	50	46	39	38	29	54	49	41	62	61	55	47	43	41	68	67	61	52	49	46								
12"x36" (305x915)	600	285	1020	44	36	28	22	20	<20	50	43	37	32	29	25	34	36	34	64	59	51	46	44	40	67	63	58	52	49	46								
	1800	855	3060	39	34	28	24	22	<20	49	44	38	33	30	25	38	36	31	70	64	54	47	45	42	73	68	60	53	50	46								
	3000	1425	5100	40	37	31	26	22	<20	50	46	40	34	30	26	46	39	37	69	63	55	47	45	41	77	69	61	53	50	46								
	4200	1995	7140	47	40	39	29	29	<20	55	50	47	37	36	26	60	55	41	75	66	59	51	48	43	75	72	63	54	51	46								
	4500	2138	7650	45	43	44	33	33	21	54	52	50	40	39	30	60	57	44	69	65	59	52	48	42	76	72	64	56	52	47								
12"x48" (305x1220)	800	380	1360	43	36	30	21	<20	49	45	38	30	26	24	24	36	33	33	60	57	51	43	43	44	67	66	60	50	48	46								
	2400	1140	4080	44	40	36	32	26	<20	52	48	44	39	35	31	44	39	34	66	63	56	47	43	43	71	68	61	51	49	47								
	4000	1900	6800	45	40	35	29	25	<20	55	48	43	35	32	25	56	49	41	66	64	57	48	44	43	69	69	61	52	49	47								
	5600	2660	9520	48	42	38	33	33	23	55	50	46	40	40	32	64	56	49	67	64	57	49	45	43	70	69	62	53	50	48								
	6000	2850	10200	50#	45#	42#	35#	35#	<20#	56	53	49	42	41	32	70	65	52	71	65	58	50	46	44	71	70	64	55	52	49								

All specifications are subject to change without notice.

Notes

- Measurements shown in *ITALIC* were less than 6dB above background noise.
- Exhaust sound is the noise emitted from the valve and transmitted through the exhaust duct into the room. Exhaust sound travels against the direction of airflow.
- ΔPs = difference in pressure across the valve
- Data was obtained from tests conducted in accordance with ANSI/ASHRAE Standard 130.
- For sound Power Level performance data at different flow rates or pressures, contact Accutrol.
- * dB levels based on maximum airflow for 12" valve of 1333 CFM (629 L/s; 2265 CMH) at 0.25"
- † dB levels based on maximum airflow for 14" valve of 2090 CFM (986 L/s; 3551 CMH) at 0.25"
- ‡ dB levels based on maximum airflow for 12" x 48" valve of 5881 CFM (2775 L/s; 9992 CMH) at 0.25"

